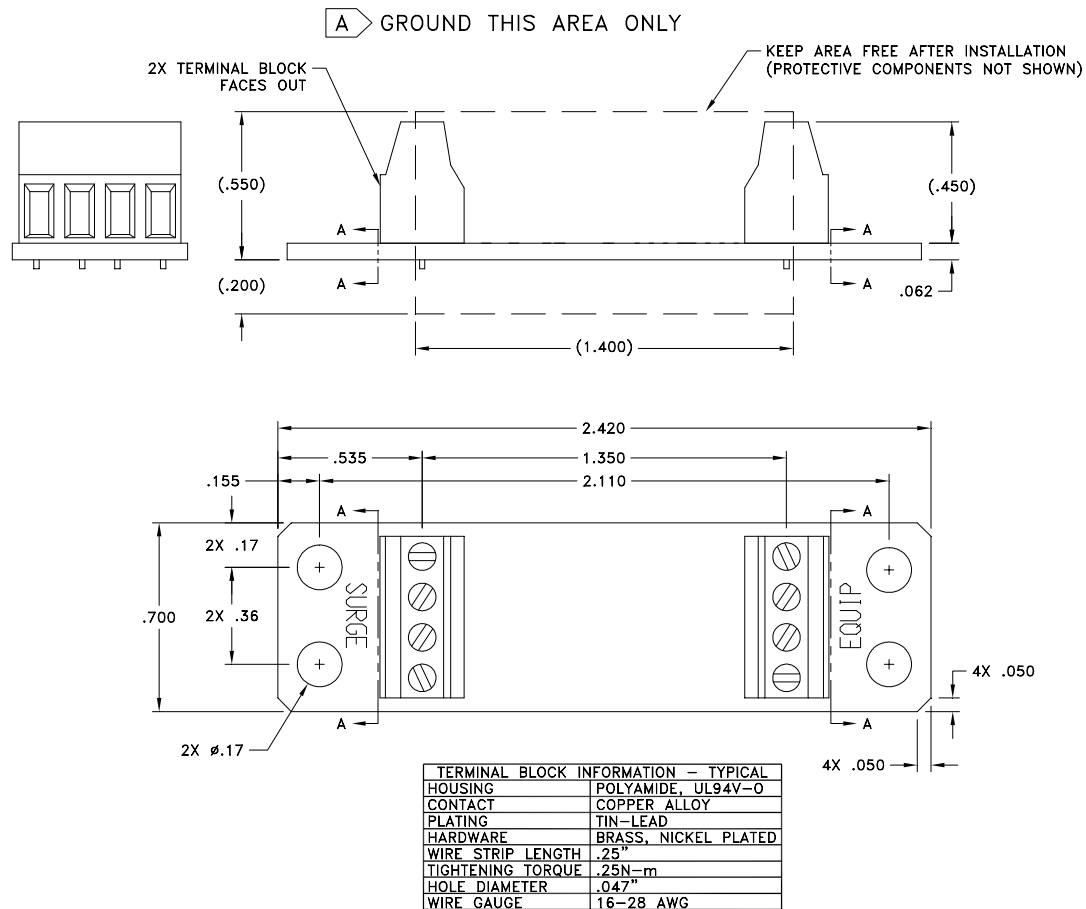


## IX-IG BOARD ASSEMBLY INSTALLATION INSTRUCTION

**CAUTION:** Do not install during adverse weather conditions when the threat of lightning strike is possible.

Connect this unit in the direction it is labeled. Each side of the unit has been labeled SURGE and EQUIPMENT (EQUIP) for this purpose.

**IT IS VERY IMPORTANT THIS UNIT BE GROUNDED TO A LOW IMPEDANCE (LOW R AND LOW L) GROUND SYSTEM IN ORDER TO WORK PROPERLY.**



**WARNING-** Do not connect during a storm! Do not connect when transmissions are occurring! Do not stay in an area that has operating equipment in an electrical storm!

*These commodities or technology are exported from the U.S. in accordance with the Export Administration Regulations. Diversion contrary to U.S. law prohibited.*