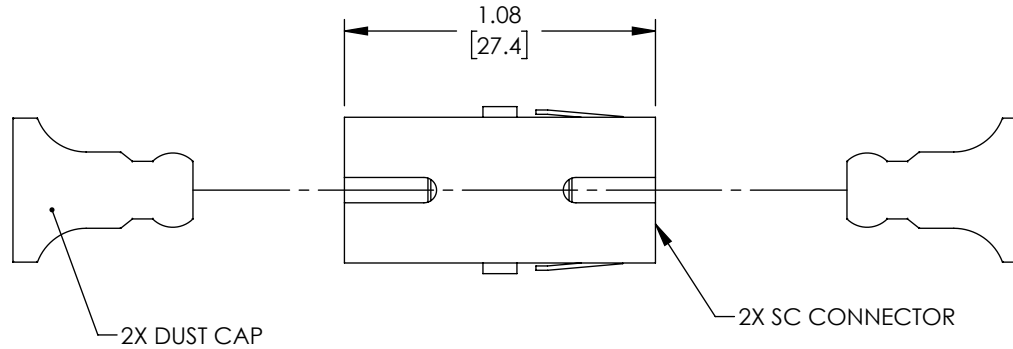
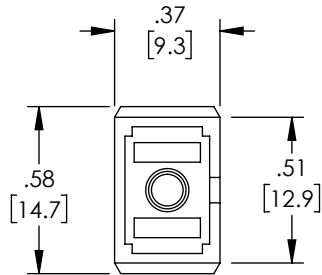
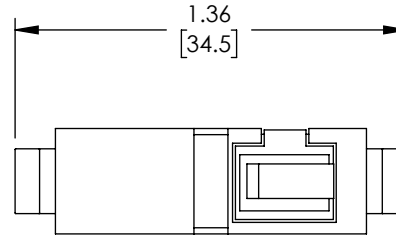
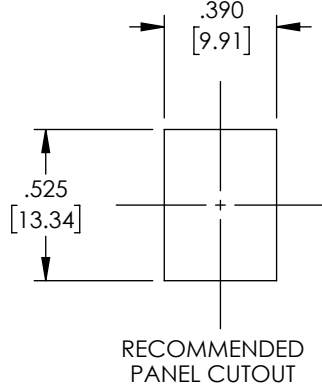


THE INFORMATION CONTAINED IN THIS DRAWING IS THE SOLE PROPERTY OF POLYPHASER, INC. ANY REPRODUCTION IN PART OR WHOLE WITHOUT THE WRITTEN PERMISSION OF POLYPHASER, INC. IS PROHIBITED.

REVISIONS			
REV	DESCRIPTION	DATE	APPROVED
A	INITIAL RELEASE	06/01/21	PHOSPODAR



NOTES:

MATERIALS:

SLEEVE: ZIRCONIA

BODY: ABS THERMOPLASTIC, GREEN

DUST CAP: ENGINEERING PLASTIC, BLACK

MOUNTING CLIPS: STAINLESS STEEL



RECOMMENDED PANEL THICKNESS: .06" [1.5]

ALL DIMENSIONS ARE FOR REFERENCE ONLY.

COMPONENT SHALL BE INDIVIDUALLY PACKAGED IN ACCORDANCE WITH L-COM SPECIFICATION PS-0031.

REGULATORY COMPLIANCE:

EU RoHS DIRECTIVE (MOST RECENT RELEASED VERSION)

UNLESS OTHERWISE SPECIFIED, DIMENSIONS ARE IN INCHES [mm] OVERALL CABLE LENGTH TOLERANCE: ≤12 [305] = +1 [25] / -0 >12 [305] ≤60 [1524] = +2 [51] / -0 >60 [1524] ≤120 [3048] = +4 [102] / -0 >120 [3048] ≤300 [7620] = +6 [152] / -0 >300 [7620] = +5% / -0 ALL OTHER DIMENSIONAL TOLERANCES: .X = ± .2 [5] FRACTIONS ± 1/32 .XX = ± .02 [.5] ANGLES ± 1° .XXX = ± .005 [.13] THIRD-ANGLE PROJECTION 	APPROVALS	DATE	 an INFINITI® brand		10701 Airport Road, Hayden, ID 83835 Phone: 1.208.635.6400 Fax: 1.208.955.2041	
	DRAWN BY DMAY	05/28/21				
	CHECKED BY PHOSPODAR	06/01/21	CATEGORY			
	APPROVED BY PHOSPODAR	06/01/21	FIBER OPTICS			
CONFIGURATION DETAILS OF UNDIMENSIONED FEATURES MAY VARY			PRODUCT DESCRIPTION SC/APC Single Mode Coupler, No Flange, Green			
COLOR VARIATIONS MAY OCCUR			SIZE A	CAGE CODE 30992	ITEM NO. OFC-SASA-A-0Z0PGN0	REV. A
			SCALE: NONE	CAD FILE: OFC-SASA-A-0Z0PGN0.SLDRW	SHEET 1 OF 1	