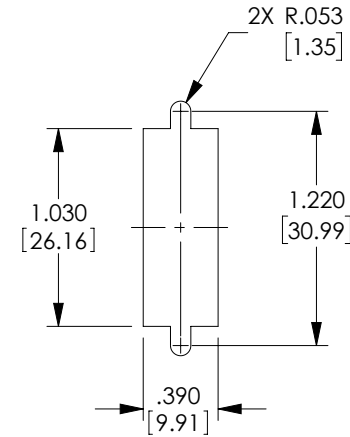
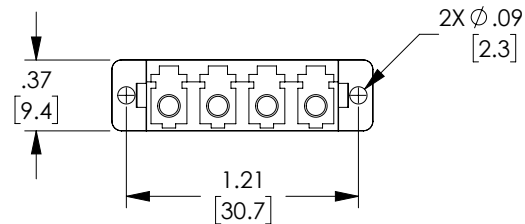
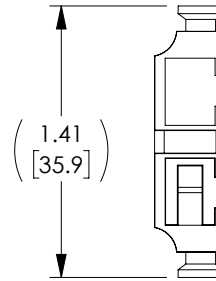
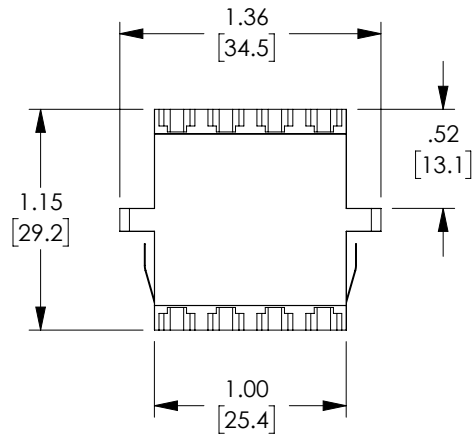


THE INFORMATION CONTAINED IN THIS DRAWING IS THE SOLE  
PROPERTY OF POLYPHASER, INC. ANY REPRODUCTION IN PART OR WHOLE  
WITHOUT THE WRITTEN PERMISSION OF POLYPHASER, INC. IS PROHIBITED.

REVISIONS			
REV	DESCRIPTION	DATE	APPROVED
A	INITIAL RELEASE	06/01/21	PHOSPODAR



RECOMMENDED  
PANEL CUTOUT

#### NOTES:

MATERIALS:  
SLEEVE: BRONZE  
BODY: ABS THERMOPLASTIC, BEIGE  
DUST CAP: ENGINEERING PLASTIC, WHITE  
MOUNTING CLIPS: STAINLESS STEEL

RECOMMENDED PANEL THICKNESS: .06" [1.5]

ALL DIMENSIONS ARE FOR REFERENCE ONLY.

COMPONENT SHALL BE INDIVIDUALLY PACKAGED IN  
ACCORDANCE WITH L-COM SPECIFICATION PS-0031.

#### REGULATORY COMPLIANCE:

EU RoHS DIRECTIVE (MOST RECENT RELEASED VERSION)

UNLESS OTHERWISE SPECIFIED, DIMENSIONS ARE IN INCHES [mm]		APPROVALS		DATE		<div><div><div>PolyPhaser</div><div>an INFINITI® brand</div></div></div>		10701 Airport Road, Hayden, ID 83835 Phone: 1.208.635.6400 Fax: 1.208.955.2041	
OVERALL CABLE LENGTH TOLERANCE: ≤12 [305] = +1 [25] / -0 >12 [305] ≤60 [1524] = +2 [51] / -0 >60 [1524] ≤120 [3048] = +4 [102] / -0 >120 [3048] ≤300 [7620] = +6 [152] / -0 >300 [7620] = +5% / -0  ALL OTHER DIMENSIONAL TOLERANCES: .XX = ± .02 [5]      FRACTIONS ± 1/32 .XXX = ± .005 [13]      ANGLES ± 1°  THIRD-ANGLE PROJECTION <div><div><div><div></div></div></div><div><div></div></div></div>		DRAWN BY DMAY		05/28/21		CATEGORY		FIBER OPTICS	
		CHECKED BY PHOSPODAR		06/01/21					
		APPROVED BY PHOSPODAR		06/01/21		PRODUCT DESCRIPTION			
		CONFIGURATION DETAILS OF UNDIMENSIONED FEATURES MAY VARY		LC Quad Multimode Adapter - Duplex SC Footprint with Flange, Beige					
COLOR VARIATIONS MAY OCCUR		SIZE A	CAGE CODE 30992	ITEM NO. OFC-LCLC-F-1B2PBG0	REV. A				
		SCALE: NONE		CAD FILE: OFC-LCLC-F-1B2PBG0.SLDDRW		SHEET 1 OF 1			