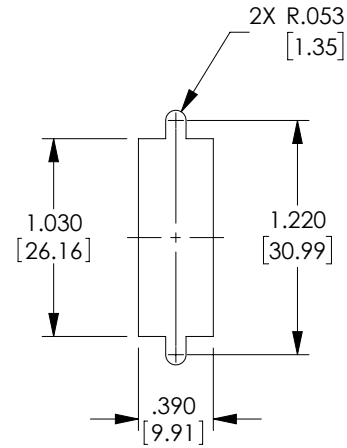
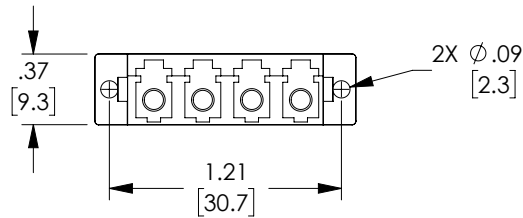
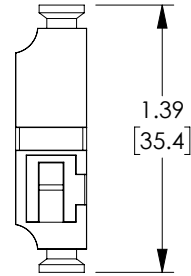
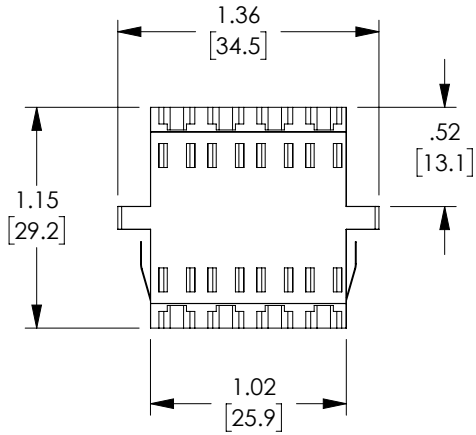


THE INFORMATION CONTAINED IN THIS DRAWING IS THE SOLE PROPERTY OF POLYPHASER, INC. ANY REPRODUCTION IN PART OR WHOLE WITHOUT THE WRITTEN PERMISSION OF POLYPHASER, INC. IS PROHIBITED.

REVISIONS			
REV	DESCRIPTION	DATE	APPROVED
A	INITIAL RELEASE	06/01/21	PHOSPODAR



RECOMMENDED  
PANEL CUTOUT

#### NOTES:

MATERIALS:  
SLEEVE: BRONZE  
BODY: ABS THERMOPLASTIC, AQUA  
DUST CAP: ENGINEERING PLASTIC, WHITE  
MOUNTING CLIPS: STAINLESS STEEL


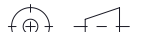
RECOMMENDED PANEL THICKNESS: .06" [1.5]

ALL DIMENSIONS ARE FOR REFERENCE ONLY.

COMPONENT SHALL BE INDIVIDUALLY PACKAGED IN ACCORDANCE WITH L-COM SPECIFICATION PS-0031.

#### REGULATORY COMPLIANCE:

EU RoHS DIRECTIVE (MOST RECENT RELEASED VERSION)

UNLESS OTHERWISE SPECIFIED, DIMENSIONS ARE IN INCHES [mm]		APPROVALS		DATE		<div> an INFINITI brand</div> <div>10701 Airport Road, Hayden, ID 83835 Phone: 1.208.635.6400 Fax: 1.208.955.2041</div>	
OVERALL CABLE LENGTH TOLERANCE: ≤12 [305] = +1 [25] / -0 >12 [305] ≤60 [1524] = +2 [51] / -0 >60 [1524] ≤120 [3048] = +4 [102] / -0 >120 [3048] ≤300 [7620] = +6 [152] / -0 >300 [7620] = +5% / -0		DRAWN BY DMAY		05/28/21			
		CHECKED BY PHOSPODAR		06/01/21		CATEGORY	
		APPROVED BY PHOSPODAR		06/01/21		FIBER OPTICS	
ALL OTHER DIMENSIONAL TOLERANCES: .X = ± .2 [5]      FRACTIONS ± 1/32 .XX = ± .02 [.5]      ANGLES ± 1° .XXX = ± .005 [.13]		CONFIGURATION DETAILS OF UNDIMENSIONED FEATURES MAY VARY		PRODUCT DESCRIPTION LC Quad Multimode Adapter - Duplex SC Footprint with Flange, Aqua			
THIRD-ANGLE PROJECTION 		COLOR VARIATIONS MAY OCCUR		SIZE <b>A</b>	CAGE CODE <b>30992</b>	ITEM NO. OFC-LCLC-F-1B2PAQ0	REV. <b>A</b>
				SCALE: NONE		CAD FILE: OFC-LCLC-F-1B2PAQ0.SLDDRW	SHEET 1 OF 1