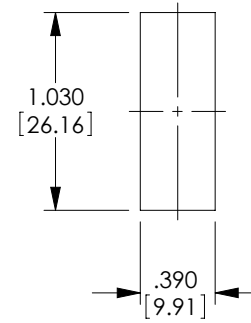
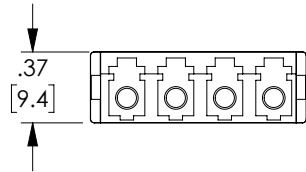
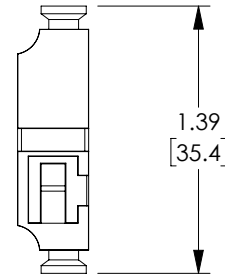
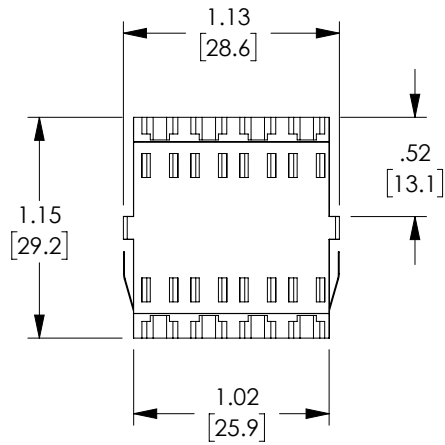


THE INFORMATION CONTAINED IN THIS DRAWING IS THE SOLE PROPERTY OF POLYPHASER, INC. ANY REPRODUCTION IN PART OR WHOLE WITHOUT THE WRITTEN PERMISSION OF POLYPHASER, INC. IS PROHIBITED.

REVISIONS			
REV	DESCRIPTION	DATE	APPROVED
A	INITIAL RELEASE	06/01/21	PHOSPODAR



RECOMMENDED  
PANEL CUTOUT

#### NOTES:

MATERIALS:  
SLEEVE: CERAMIC  
BODY: ABS THERMOPLASTIC, BLUE  
DUST CAP: ENGINEERING PLASTIC, WHITE  
MOUNTING CLIPS: STAINLESS STEEL


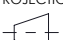
RECOMMENDED PANEL THICKNESS: .06" [1.5]

ALL DIMENSIONS ARE FOR REFERENCE ONLY.

COMPONENT SHALL BE INDIVIDUALLY PACKAGED IN ACCORDANCE WITH L-COM SPECIFICATION PS-0031.

#### REGULATORY COMPLIANCE:

EU RoHS DIRECTIVE (MOST RECENT RELEASED VERSION)

UNLESS OTHERWISE SPECIFIED, DIMENSIONS ARE IN INCHES [mm]		APPROVALS		DATE		<div><div><div>PolyPhaser</div><div>an INFINITI® brand</div></div></div>		10701 Airport Road, Hayden, ID 83835 Phone: 1.208.635.6400 Fax: 1.208.955.2041	
OVERALL CABLE LENGTH TOLERANCE: ≤12 [305] = +1 [25] / -0 >12 [305] ≤60 [1524] = +2 [51] / -0 >60 [1524] ≤120 [3048] = +4 [102] / -0 >120 [3048] ≤300 [7620] = +6 [152] / -0 >300 [7620] = +5% / -0  ALL OTHER DIMENSIONAL TOLERANCES: .X = ± .2 [5]                      FRACTIONS .XX = ± .02 [.5]                  ± 1/32 .XXX = ± .005 [.13]              ANGLES ± 1°  THIRD-ANGLE PROJECTION <div><div></div><div></div></div>		DRAWN BY DMAY		06/01/21		CATEGORY  FIBER OPTICS			
		CHECKED BY PHOSPODAR		06/01/21					
		APPROVED BY PHOSPODAR		06/01/21					
		CONFIGURATION DETAILS OF UNDIMENSIONED FEATURES MAY VARY		PRODUCT DESCRIPTION  LC Quad Single Mode Adapter - Duplex SC Footprint no Flange, Blue				SCALE: NONE    CAD FILE: OFC-LCLC-C-0Z2PBL0.SLDDRW    SHEET 1 OF 1	
COLOR VARIATIONS MAY OCCUR		SIZE <b>A</b>		CAGE CODE <b>30992</b>		ITEM NO. OFC-LCLC-C-0Z2PBL0		REV. <b>A</b>	