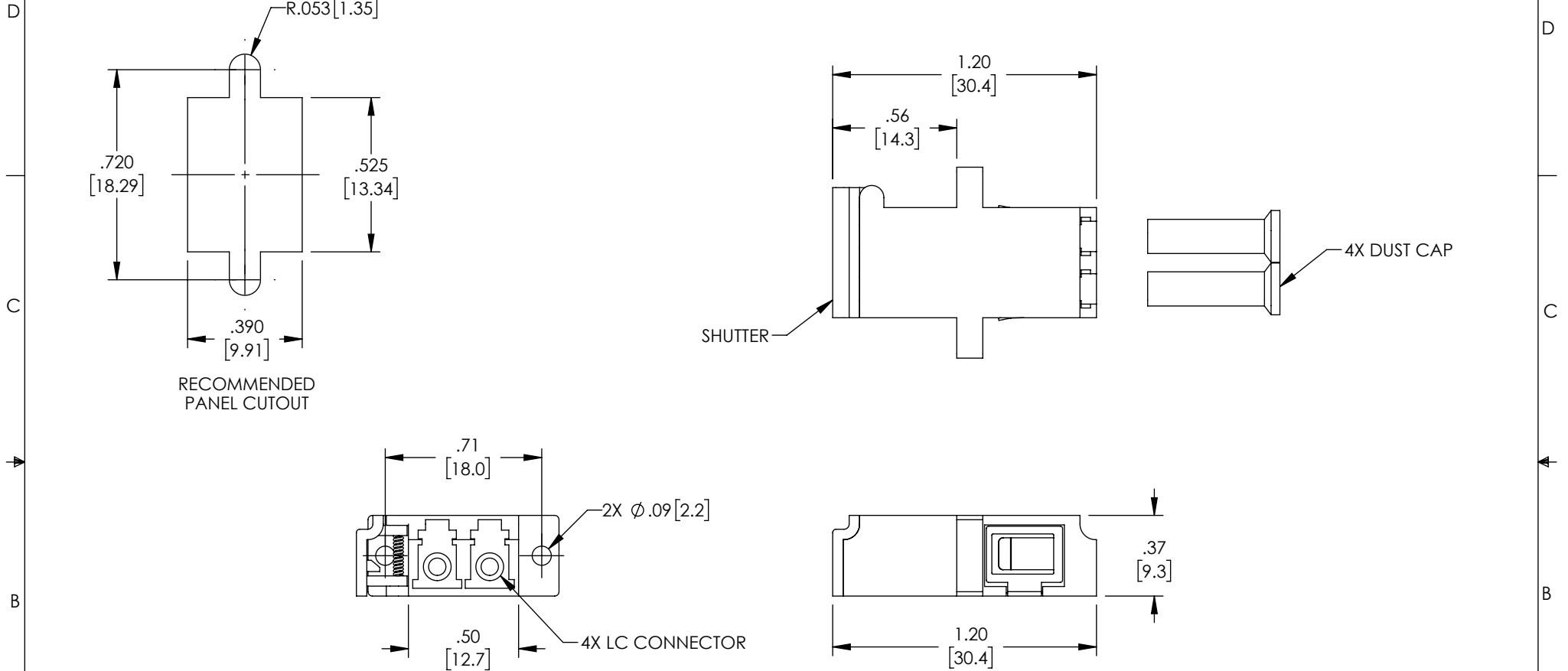


THE INFORMATION CONTAINED IN THIS DRAWING IS THE SOLE
PROPERTY OF POLYPHASER, INC.. ANY REPRODUCTION IN PART OR WHOLE
WITHOUT THE WRITTEN PERMISSION OF POLYPHASER, INC.. IS PROHIBITED.

REVISIONS			
REV	DESCRIPTION	DATE	APPROVED
A	INITIAL RELEASE	06/01/21	PHOSPODAR



NOTES:

MATERIALS:
SLEEVE: CERAMIC
BODY: ABS THERMOPLASTIC, BLUE
DUST CAP: ENGINEERING PLASTIC, WHITE
MOUNTING CLIPS: STAINLESS STEEL



RECOMMENDED PANEL THICKNESS: .06" [1.5]

ALL DIMENSIONS ARE FOR REFERENCE ONLY.

COMPONENT SHALL BE INDIVIDUALLY PACKAGED IN
ACCORDANCE WITH L-COM SPECIFICATION PS-0031.

REGULATORY COMPLIANCE:

EU RoHS DIRECTIVE (MOST RECENT RELEASED VERSION)

UNLESS OTHERWISE SPECIFIED, DIMENSIONS ARE IN INCHES [mm]		APPROVALS		DATE		<div> an INFINITI® brand</div> <div>10701 Airport Road, Hayden, ID 83835 Phone: 1.208.635.6400 Fax: 1.208.955.2041</div>	
OVERALL CABLE LENGTH TOLERANCE: ≤12 [305] = +1 [25] / -0 >12 [305] ≤60 [1524] = +2 [51] / -0 >60 [1524] ≤120 [3048] = +4 [102] / -0 >120 [3048] ≤300 [7620] = +6 [152] / -0 >300 [7620] = +5% / -0 ALL OTHER DIMENSIONAL TOLERANCES: .X = ± .2 [5] FRACTIONS ± 1/32 .XX = ± .02 [.5] ANGLES ± 1° .XXX = ± .005 [.13]		DRAWN BY DMAY		06/01/21			
		CHECKED BY PHOSPODAR		06/01/21			
		APPROVED BY PHOSPODAR		06/01/21			
				CATEGORY		FIBER OPTICS	
		CONFIGURATION DETAILS OF UNDIMENSIONED FEATURES MAY VARY		PRODUCT DESCRIPTION LC Duplex Single Mode, SC Footprint, Shuttered, Blue			
THIRD-ANGLE PROJECTION 		COLOR VARIATIONS MAY OCCUR		SIZE A	CAGE CODE 30992	ITEM NO. OFC-LCLC-B-1Z1PBLP	REV. A
				SCALE: NONE		CAD FILE: OFC-LCLC-B-1Z1PBLP.SLDDRW	SHEET 1 OF 1