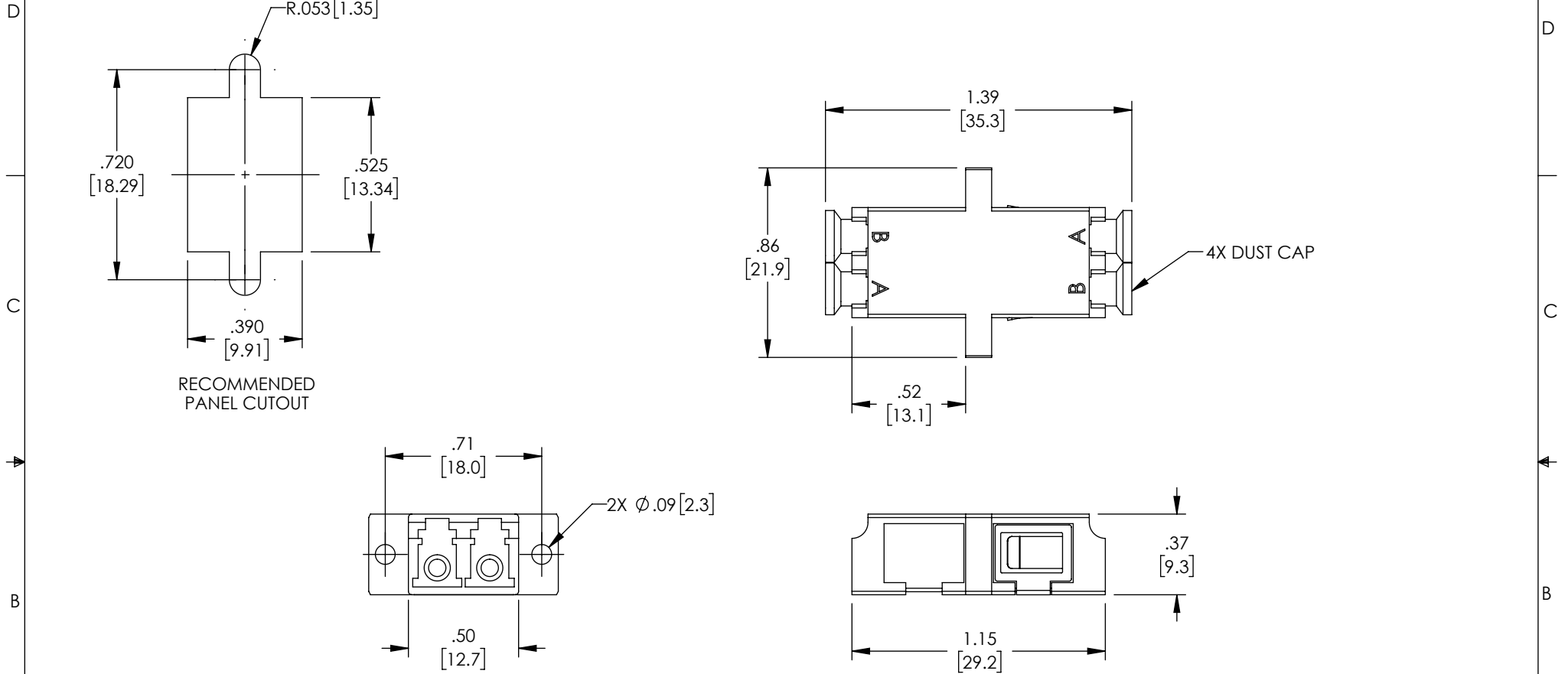


THE INFORMATION CONTAINED IN THIS DRAWING IS THE SOLE PROPERTY OF POLYPHASER, INC. ANY REPRODUCTION IN PART OR WHOLE WITHOUT THE WRITTEN PERMISSION OF POLYPHASER, INC. IS PROHIBITED.

REVISIONS			
REV	DESCRIPTION	DATE	APPROVED
A	INITIAL RELEASE	06/01/21	PHOSPODAR



**NOTES:**

MATERIALS:  
SLEEVE: CERAMIC  
BODY: ABS THERMOPLASTIC, GREEN  
DUST CAP: ENGINEERING PLASTIC, WHITE  
MOUNTING CLIPS: STAINLESS STEEL

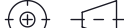
RECOMMENDED PANEL THICKNESS: .06" [1.5]

ALL DIMENSIONS ARE FOR REFERENCE ONLY.

COMPONENT SHALL BE INDIVIDUALLY PACKAGED IN ACCORDANCE WITH L-COM SPECIFICATION PS-0031.

**REGULATORY COMPLIANCE:**

EU RoHS DIRECTIVE (MOST RECENT RELEASED VERSION)

UNLESS OTHERWISE SPECIFIED, DIMENSIONS ARE IN INCHES [mm]		APPROVALS		DATE		<div><div><div></div><div>PolyPhaser</div><div>an INFINITI® brand</div></div></div>		10701 Airport Road, Hayden, ID 83835 Phone: 1.208.635.6400 Fax: 1.208.955.2041	
OVERALL CABLE LENGTH TOLERANCE: ≤12 [305] = +1 [25] / -0 >12 [305] ≤60 [1524] = +2 [51] / -0 >60 [1524] ≤120 [3048] = +4 [102] / -0 >120 [3048] ≤300 [7620] = +6 [152] / -0 >300 [7620] = +5% / -0		DRAWN BY DMAY		05/28/21		CATEGORY		FIBER OPTICS	
CHECKED BY PHOSPODAR		06/01/21							
APPROVED BY PHOSPODAR		06/01/21							
ALL OTHER DIMENSIONAL TOLERANCES: .X = ± .2 [5] .XX = ± .02 [.5] .XXX = ± .005 [.13]		FRACTIONS ± 1/32 ANGLES ± 1°		CONFIGURATION DETAILS OF UNDIMENSIONED FEATURES MAY VARY		PRODUCT DESCRIPTION LC/APC Duplex Coupler, SC Footprint, Flange, Green			
THIRD-ANGLE PROJECTION 		COLOR VARIATIONS MAY OCCUR		SIZE <b>A</b>	CAGE CODE <b>30992</b>	ITEM NO. OFC-LALA-B-1Z1PGN0		REV. <b>A</b>	
				SCALE: NONE		CAD FILE: OFC-LALA-B-1Z1PGN0.SLDDRW		SHEET 1 OF 1	