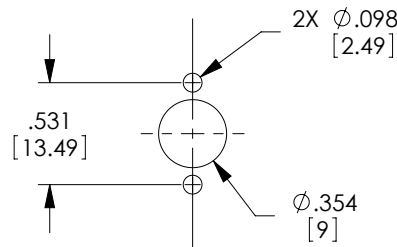
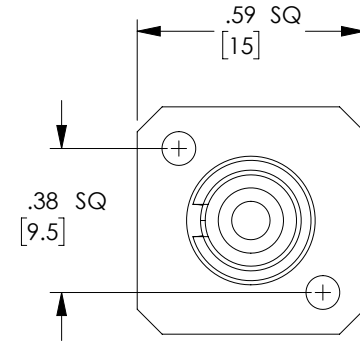
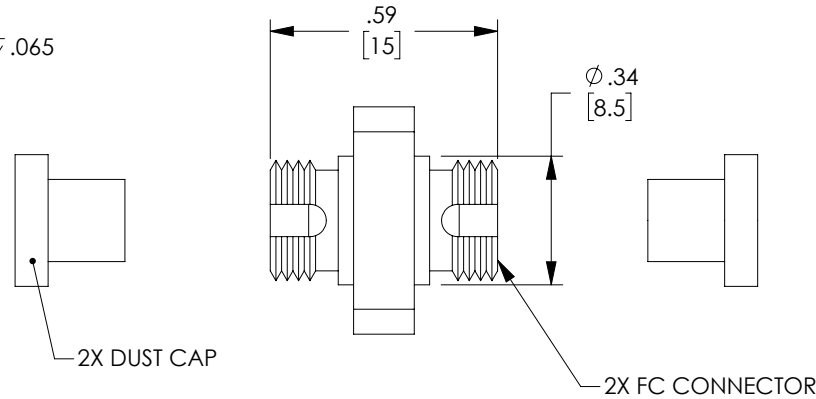
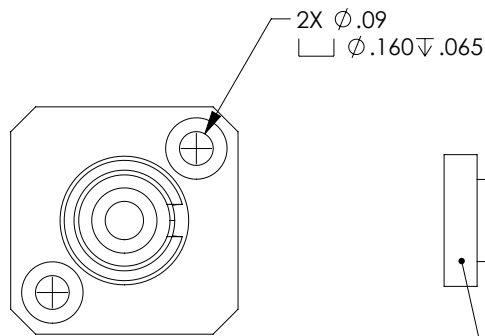


THE INFORMATION CONTAINED IN THIS DRAWING IS THE SOLE PROPERTY OF POLYPHASER, INC. ANY REPRODUCTION IN PART OR WHOLE WITHOUT THE WRITTEN PERMISSION OF POLYPHASER, INC. IS PROHIBITED.

REVISIONS			
REV	DESCRIPTION	DATE	APPROVED
A	INITIAL RELEASE	06/01/21	PHOSPODAR



RECOMMENDED
PANEL CUTOUT

NOTES:


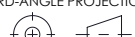
MATERIAL:
SLEEVE: BRONZE
BODY: ZINC ALLOY, NICKEL PLATED
DUST CAP: VINYL, GREEN

ALL DIMENSIONS ARE FOR REFERENCE ONLY.

COMPONENT SHALL BE INDIVIDUALLY PACKAGED IN
ACCORDANCE WITH L-COM SPECIFICATION PS-0031.

REGULATORY COMPLIANCE:

EU RoHS DIRECTIVE (MOST RECENT RELEASED VERSION)

UNLESS OTHERWISE SPECIFIED, DIMENSIONS ARE IN INCHES [mm]		APPROVALS		DATE		 an INFINITI® brand		10701 Airport Road, Hayden, ID 83835 Phone: 1.208.635.6400 Fax: 1.208.955.2041			
OVERALL CABLE LENGTH TOLERANCE: ≤12 [305] = +1 [25] / -0 >12 [305] ≤60 [1524] = +2 [51] / -0 >60 [1524] ≤120 [3048] = +4 [102] / -0 >120 [3048] ≤300 [7620] = +6 [152] / -0 >300 [7620] = +5% / -0 ALL OTHER DIMENSIONAL TOLERANCES: .X = ± .2 [5] FRACTIONS .XX = ± .02 [.5] ANGLES ± 1° .XXX = ± .005 [.13]		DRAWN BY DMAY		06/01/21		CATEGORY FIBER OPTICS		PRODUCT DESCRIPTION FC/APC Single Mode Coupler, Square Metal Body			
		CHECKED BY PHOSPODAR		06/01/21							
		APPROVED BY PHOSPODAR		06/01/21							
		CONFIGURATION DETAILS OF UNDIMENSIONED FEATURES MAY VARY									
THIRD-ANGLE PROJECTION 		COLOR VARIATIONS MAY OCCUR		SIZE A		CAGE CODE 30992		ITEM NO. OFC-FAFA-A-SB0MMT0		REV. A	
				SCALE: NONE		CAD FILE: OFC-FAFA-A-SB0MMT0.SLDRW				SHEET 1 OF 1	