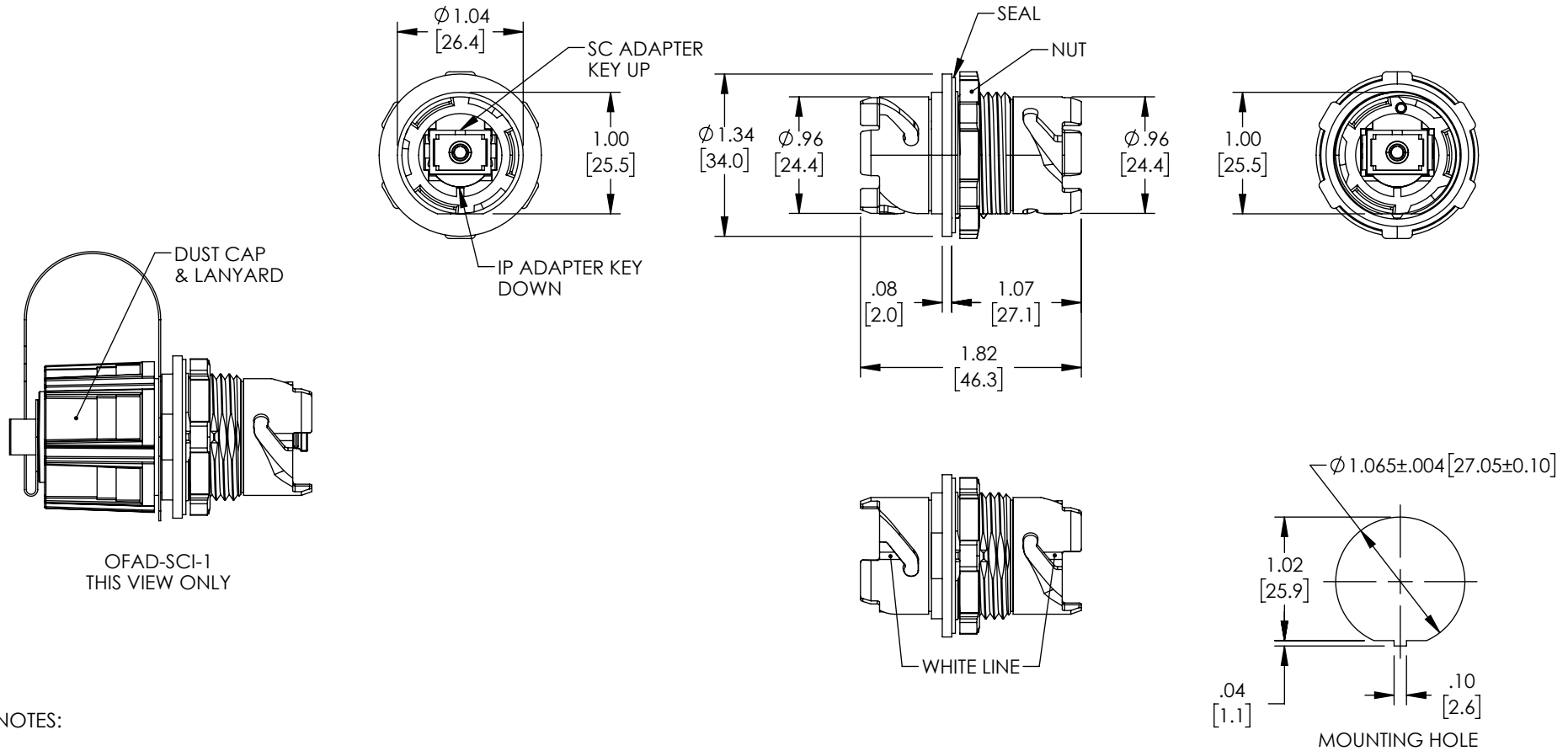


THE INFORMATION CONTAINED IN THIS DRAWING IS THE SOLE PROPERTY OF POLYPHASER, INC. ANY REPRODUCTION IN PART OR WHOLE WITHOUT THE WRITTEN PERMISSION OF POLYPHASER, INC. IS PROHIBITED.

REVISIONS			
REV	DESCRIPTION	DATE	APPROVED
A	INITIAL RELEASE	05/10/2021	PHOSPODAR

ITEM NO	DUST CAP COMPONENT
OFAD-SCI-0	WITHOUT DUST CAP
OFAD-SCI-1	WITH DUST CAP





OFAD-SCI-1
THIS VIEW ONLY

NOTES:

1. ASSEMBLY SHALL BE INDIVIDUALLY PACKAGED IN ACCORDANCE WITH L-COM SPECIFICATION PS-0031.

REGULATORY COMPLIANCE:

EU RoHS DIRECTIVE (MOST RECENT RELEASED VERSION)

UNLESS OTHERWISE SPECIFIED, DIMENSIONS ARE IN INCHES [mm] OVERALL CABLE LENGTH TOLERANCE: ≤12 [305] = +1 [25] / -0 >12 [305] ≤60 [1524] = +2 [51] / -0 >60 [1524] ≤120 [3048] = +4 [102] / -0 >120 [3048] ≤300 [7620] = +6 [152] / -0 >300 [7620] = +5% / -0 ALL OTHER DIMENSIONAL TOLERANCES: .X = ± .2 [5] FRACTIONS .XX = ± .02 [.5] ± 1/32 .XXX = ± .005 [.13] ANGLES ± 1° THIRD-ANGLE PROJECTION 	APPROVALS	DATE	 an INFINITI brand		10701 Airport Road, Hayden, ID 83835 Phone: 1.208.635.6400 Fax: 1.208.955.2041	
	DRAWN BY DMAY	05/05/2021				
	CHECKED BY PHOSPODAR	05/10/2021	CATEGORY		FIBER OPTIC	
	APPROVED BY PHOSPODAR	05/10/2021	PRODUCT DESCRIPTION			
CONFIGURATION DETAILS OF UNDIMENSIONED FEATURES MAY VARY		IP68 SC/PC INLINE COUPLER, SM/MM				
COLOR VARIATIONS MAY OCCUR		SIZE A	CAGE CODE 30992	ITEM NO. OFAD-SCI	REV. A	
		SCALE: NONE CAD FILE: OFAD-SCI.SLDDRW			SHEET 1 OF 1	