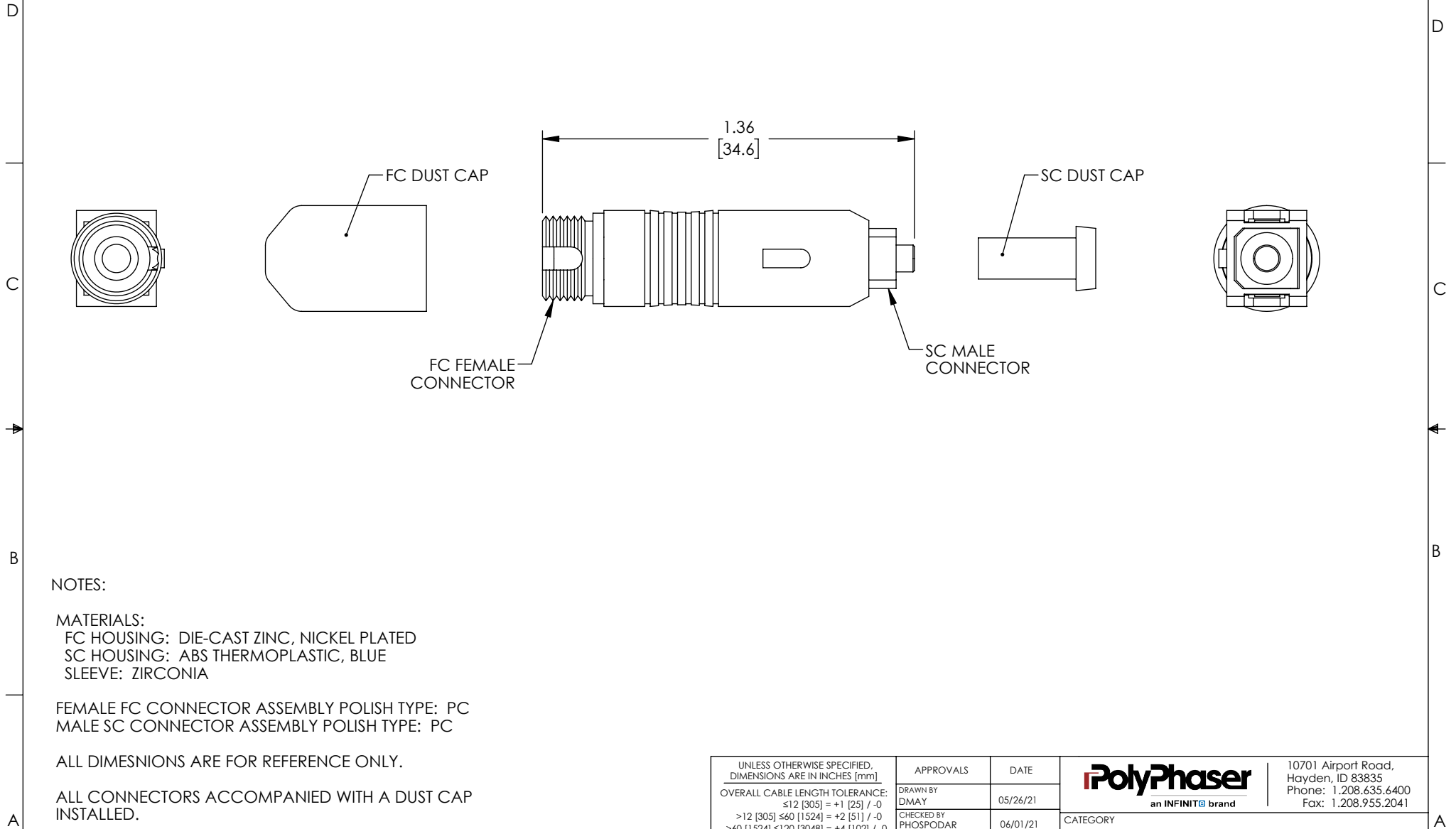


THE INFORMATION CONTAINED IN THIS DRAWING IS THE SOLE PROPERTY OF POLYPHASER, INC. ANY REPRODUCTION IN PART OR WHOLE WITHOUT THE WRITTEN PERMISSION OF POLYPHASER, INC. IS PROHIBITED.

REVISIONS			
REV	DESCRIPTION	DATE	APPROVED
A	INITIAL RELEASE	06/01/21	PHOSPODAR



NOTES:

MATERIALS:  
FC HOUSING: DIE-CAST ZINC, NICKEL PLATED  
SC HOUSING: ABS THERMOPLASTIC, BLUE  
SLEEVE: ZIRCONIA


FEMALE FC CONNECTOR ASSEMBLY POLISH TYPE: PC  
MALE SC CONNECTOR ASSEMBLY POLISH TYPE: PC

ALL DIMESNIONS ARE FOR REFERENCE ONLY.

ALL CONNECTORS ACCOMPANIED WITH A DUST CAP INSTALLED.

COMPONENT SHALL BE INDIVIDUALLY PACKAGED IN ACCORDANCE WITH L-COM SPECIFICATION PS-0031.

**REGULATORY COMPLIANCE:**  
EU RoHS DIRECTIVE (MOST RECENT RELEASED VERSION)

UNLESS OTHERWISE SPECIFIED, DIMENSIONS ARE IN INCHES [mm]		APPROVALS		DATE		<div><div><div></div><div>PolyPhaser</div><div>an INFINITI® brand</div></div><div>10701 Airport Road, Hayden, ID 83835 Phone: 1.208.635.6400 Fax: 1.208.955.2041</div></div>	
OVERALL CABLE LENGTH TOLERANCE: ≤12 [305] = +1 [25] / -0 >12 [305] ≤60 [1524] = +2 [51] / -0 >60 [1524] ≤120 [3048] = +4 [102] / -0 >120 [3048] ≤300 [7620] = +6 [152] / -0 >300 [7620] = +5% / -0		DRAWN BY DMAY		05/26/21			
ALL OTHER DIMENSIONAL TOLERANCES: .X = ± .2 [5]   FRACTIONS .XX = ± .02 [.5]   ± 1/32 .XXX = ± .005 [.13]   ANGLES ± 1°		CHECKED BY PHOSPODAR		06/01/21		CATEGORY	
		APPROVED BY PHOSPODAR		06/01/21		FIBER OPTICS	
		CONFIGURATION DETAILS OF UNDIMENSIONED FEATURES MAY VARY		PRODUCT DESCRIPTION SC Male to FC female Single Mode Hybrid Fiber Adapter			
THIRD-ANGLE PROJECTION 		COLOR VARIATIONS MAY OCCUR		SIZE A	CAGE CODE 30992	ITEM NO. OFA-SCMFCF-A-0Z0CBL	REV. A
				SCALE: NONE		CAD FILE: OFA-SCMFCF-A-0Z0CBL.SLDDRW	
						SHEET 1 OF 1	