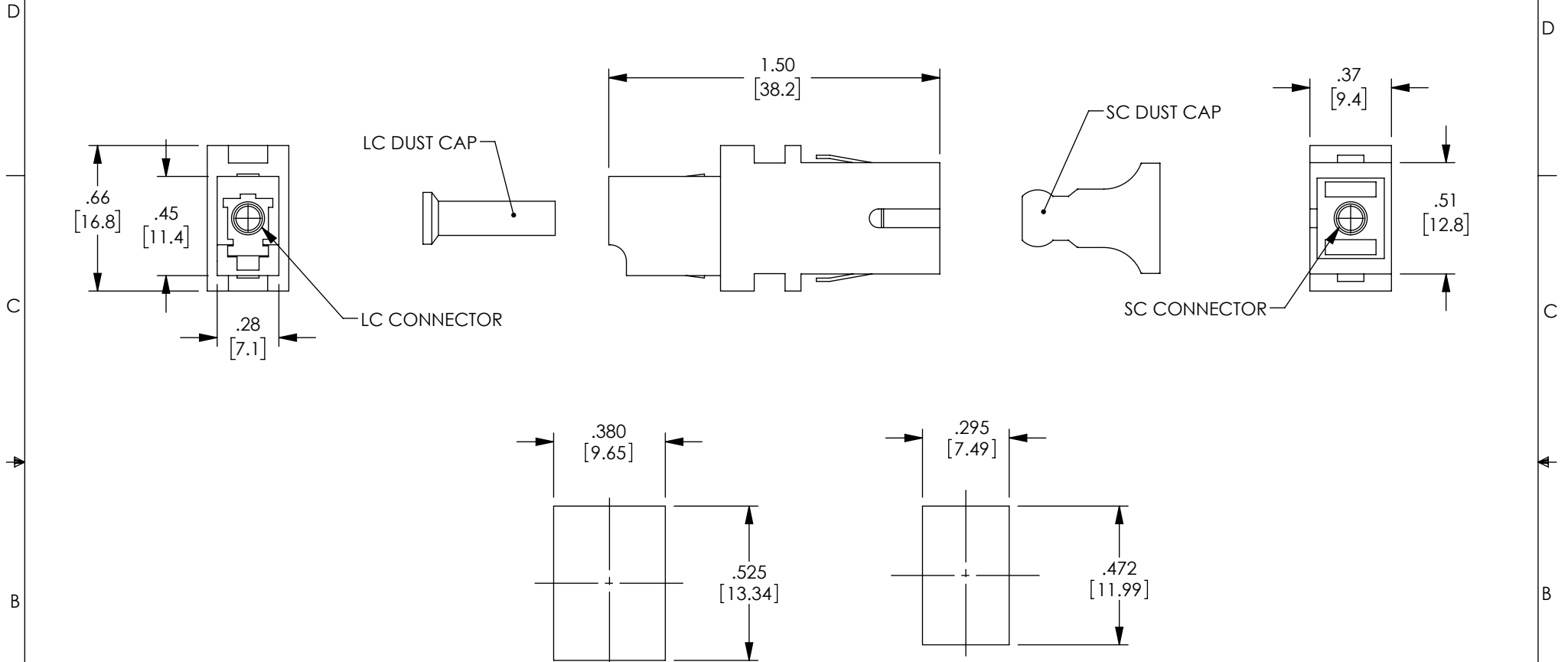


THE INFORMATION CONTAINED IN THIS DRAWING IS THE SOLE PROPERTY OF POLYPHASER, INC.. ANY REPRODUCTION IN PART OR WHOLE WITHOUT THE WRITTEN PERMISSION OF POLYPHASER, INC.. IS PROHIBITED.

REVISIONS			
REV	DESCRIPTION	DATE	APPROVED
A	INITIAL RELEASE	06/01/21	PHOSPODAR



NOTES:

MATERIALS:
BODY: ABS THERMOPLASTIC, BLUE
SLEEVE: CERAMIC
MOUNTING CLIPS: STAINLESS STEEL
LC DUST CAP: ENGINEERING PLASTIC: WHITE
SC DUST CAP: ENGINEERING PLASTIC: BLACK

RECOMMENDED PANEL THICKNESS: .06" [1.5]


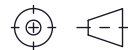
ALL DIMENSIONS ARE FOR REFERENCE ONLY.

COMPONENT SHALL BE INDIVIDUALLY PACKAGED IN ACCORDANCE WITH L-COM SPECIFICATION PS-0031.

REGULATORY COMPLIANCE:
EU RoHS DIRECTIVE (MOST RECENT RELEASED VERSION)

RECOMMENDED SC
PANEL CUTOUT

RECOMMENDED LC
PANEL CUTOUT

UNLESS OTHERWISE SPECIFIED, DIMENSIONS ARE IN INCHES [mm] OVERALL CABLE LENGTH TOLERANCE: ≤12 [305] = +1 [25] / -0 >12 [305] ≤60 [1524] = +2 [51] / -0 >60 [1524] ≤120 [3048] = +4 [102] / -0 >120 [3048] ≤300 [7620] = +6 [152] / -0 >300 [7620] = +5% / -0 ALL OTHER DIMENSIONAL TOLERANCES: .X = ± .2 [5] FRACTIONS ± 1/32 .XX = ± .02 [5] ANGLES ± 1° .XXX = ± .005 [13]	APPROVALS	DATE	 an INFINITO brand 10701 Airport Road, Hayden, ID 83835 Phone: 1.208.635.6400 Fax: 1.208.955.2041
	DRAWN BY DMAY	05/28/21	
	CHECKED BY PHOSPODAR	06/01/21	
	APPROVED BY PHOSPODAR	06/01/21	CATEGORY FIBER OPTICS
THIRD-ANGLE PROJECTION 	CONFIGURATION DETAILS OF UNDIMENSIONED FEATURES MAY VARY	PRODUCT DESCRIPTION SC Female to LC Female Adapter for SMF and MMF	
	COLOR VARIATIONS MAY OCCUR	SIZE A	CAGE CODE 30992
		ITEM NO. OFA-SCFLCF-G-0Z0PBL	REV. A
		SCALE: NONE	CAD FILE: OFA-SCFLCF-G-0Z0PBL.SLDDRW
		SHEET 1 OF 1	