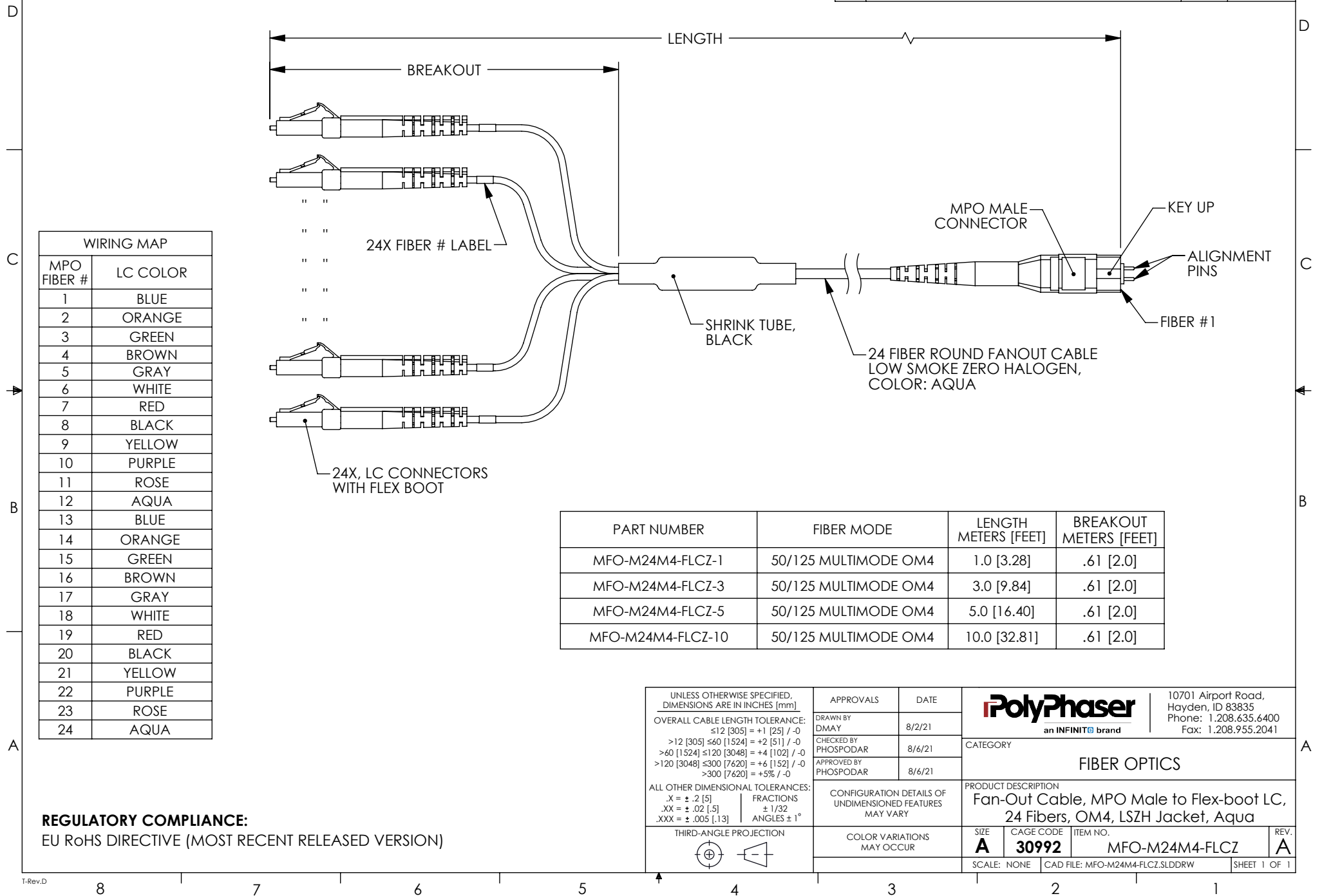



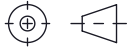
THE INFORMATION CONTAINED IN THIS DRAWING IS THE SOLE PROPERTY OF POLYPHASER, INC.. ANY REPRODUCTION IN PART OR WHOLE WITHOUT THE WRITTEN PERMISSION OF POLYPHASER, INC. IS PROHIBITED.

REVISIONS			
REV	DESCRIPTION	DATE	APPROVED
A	INITIAL RELEASE	8/6/21	PHOSPODAR



WIRING MAP	
MPO FIBER #	LC COLOR
1	BLUE
2	ORANGE
3	GREEN
4	BROWN
5	GRAY
6	WHITE
7	RED
8	BLACK
9	YELLOW
10	PURPLE
11	ROSE
12	AQUA
13	BLUE
14	ORANGE
15	GREEN
16	BROWN
17	GRAY
18	WHITE
19	RED
20	BLACK
21	YELLOW
22	PURPLE
23	ROSE
24	AQUA

PART NUMBER	FIBER MODE	LENGTH METERS [FEET]	BREAKOUT METERS [FEET]
MFO-M24M4-FLCZ-1	50/125 MULTIMODE OM4	1.0 [3.28]	.61 [2.0]
MFO-M24M4-FLCZ-3	50/125 MULTIMODE OM4	3.0 [9.84]	.61 [2.0]
MFO-M24M4-FLCZ-5	50/125 MULTIMODE OM4	5.0 [16.40]	.61 [2.0]
MFO-M24M4-FLCZ-10	50/125 MULTIMODE OM4	10.0 [32.81]	.61 [2.0]

UNLESS OTHERWISE SPECIFIED, DIMENSIONS ARE IN INCHES [mm]		APPROVALS		DATE		 an INFINITI® brand		10701 Airport Road, Hayden, ID 83835 Phone: 1.208.635.6400 Fax: 1.208.955.2041	
OVERALL CABLE LENGTH TOLERANCE: ≤12 [305] = +1 [25] / -0 >12 [305] ≤60 [1524] = +2 [51] / -0 >60 [1524] ≤120 [3048] = +4 [102] / -0 >120 [3048] ≤300 [7620] = +6 [152] / -0 >300 [7620] = +5% / -0		DRAWN BY DMAY		8/2/21		CATEGORY			
ALL OTHER DIMENSIONAL TOLERANCES: .X = ± .2 [5]             FRACTIONS .XX = ± .02 [.5]           ± 1/32 .XXX = ± .005 [.13]        ANGLES ± 1°		CHECKED BY PHOSPODAR		8/6/21		FIBER OPTICS			
		APPROVED BY PHOSPODAR		8/6/21		PRODUCT DESCRIPTION			
		CONFIGURATION DETAILS OF UNDIMENSIONED FEATURES MAY VARY				Fan-Out Cable, MPO Male to Flex-boot LC, 24 Fibers, OM4, LSZH Jacket, Aqua			
THIRD-ANGLE PROJECTION 		COLOR VARIATIONS MAY OCCUR		SIZE <b>A</b>		CAGE CODE <b>30992</b>		ITEM NO. MFO-M24M4-FLCZ	
						SCALE: NONE		CAD FILE: MFO-M24M4-FLCZ.SLDDRW	
								SHEET 1 OF 1	

**REGULATORY COMPLIANCE:**  
EU RoHS DIRECTIVE (MOST RECENT RELEASED VERSION)