

Lightning Rod, Security Camera Mount, Aluminum, Bi-Directional



LR-SC-PP

Features

- Prevent direct lightning strikes
- Route lightning energy safely into the grounding system if strikes occur
- Multi-spire versions available

Applications

- Rooftops
- Superstructures
- Chimneys
- Outdoor Equipment

Description

Lightning rod LR-SC-PP from PolyPhaser protects buildings, equipment and personnel from the damaging effects of direct lightning strikes. This lightning rod is constructed from highly conductive aluminum and is geometrically designed to maximize effectiveness. PolyPhaser lightning rod products are available in stock with same day shipping.

Environmental Specifications

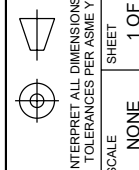
Operating Temperature	-40 to +80 deg C
Mount Type	Security Camera

PolyPhaser protects and increases the reliability of global RF communications networks, including transportation, telecommunications, defense, security and industrial applications, with superior RF surge protection technologies including DC Block, DC Pass and Ultra Low PIM. Backed by responsive service and expert technical support PolyPhaser continually expands its product offering and services to serve engineers' urgent needs for RF components in mission critical communication networks.

Click the following link (or enter part number in "SEARCH" on website) to obtain additional part information including price, inventory and certifications: [Lightning Rod, Security Camera Mount, Aluminum, Bi-Directional LR-SC-PP](#)

URL: <https://www.polyphaser.com/undefined-url-for-pn-lr-sc-pp-lr-sc-pp-p.aspx>

The information contained in this document is accurate to the best of our knowledge and representative of the part described herein. It may be necessary to make modifications to the part and/or the documentation of the part, in order to implement improvements. PolyPhaser reserves the right to make such changes as required. Unless otherwise stated, all specifications are nominal. PolyPhaser does not make any representation or warranty regarding the suitability of the part described herein for any particular purpose, and PolyPhaser does not assume any liability arising out of the use of any part or documentation.



PolyPhaser®
an INFINITE® brand

Website: www.PolyPhaser.com
Phone: 1 800 882 9110 | 1 208 635 6400

UNLESS OTHERWISE SPECIFIED LEADING DIMENSIONS ARE IN INCHES DIMENSIONS IN [] ARE MILLIMETERS	TOLERANCES:	
	$X = \pm 2 [5]$	FRACTIONS
	$XX = \pm 0.2 [0.5]$	$\pm 1/32$
	$XXX = \pm 0.005 [0.13]$	ANGLES $\pm 1^\circ$
CABLE LENGTH TOLERANCES:		

NOTE:
1 SEE IABE SPECIFICATION II S-100 FOR INTERNAL USE ONLY

THE INFORMATION CONTAINED IN THIS DRAWING IS THE SOLE PROPERTY OF INFINITE ELECTRONICS, INC. ANY REPRODUCTION IN PART OR WHOLE WITHOUT THE WRITTEN PERMISSION OF INFINITE ELECTRONICS, INC. IS PROHIBITED. THESE COMMODITIES, TECHNOLOGY OR SOFTWARE WERE EXPORTED FROM THE UNITED STATES IN ACCORDANCE WITH THE EXPORT ADMINISTRATION REGULATIONS. DIVISION CONTRARY TO U.S. LAW PROHIBITED.

REVISION				
ZONE	REV	DESCRIPTION	DATE	CHANGED BY
	A	INITIAL RELEASE	10/09/2023	AKRESOWSKI
				DREBECK
				APPROVED

DESCRIPTION		ITEM NO.	REV
LIGHTNING ROD, SECURITY CAMERA MOUNT		LR-SC-PP	A