

RF Surge Protector SPD, Reverse Polarity TNC F/F, DC
- 6GHz, 60 V Max., 10kA, Gas Discharge Tube



GTH-RPTFF-AL

Features

- Broadband Performance from DC to 6 GHz
- Repetitive Lightning Strike Capability
- Bi-directional Protection
- Replaceable Gas Tube for Installation Longevity
- Robust Brass Construction

Applications

- WiFi
- Wireless Base Stations
- Automotive
- Avionics
- Military Communications

Description

RF surge protector (also known as lightning arrestor) GTH-RPTFF-AL from PolyPhaser utilizing a gas discharge tube design to protect critical hardware while maintaining the RF performance. This RF surge protector component is manufactured in a coaxial in-line design with wide operating frequency range. PolyPhaser RF surge protector products are available in stock with same day shipping.

Electrical Specifications

Surge Protector Type
DC Handling

Gas Discharge Tube
DC Pass

Description	Minimum	Typical	Maximum	Units
Frequency Range	DC		6	GHz
Impedance		50		Ohms
VSWR		1.2:1	1.43:1	
Insertion Loss		0.4	0.9	dB
Operating Voltage (DC)			60	Volts
Input Power, CW				
Surge Current IEC 61000-4-5 8/20µs			5	kA
Turn On Voltage		180		Volts

Mechanical Specifications

Size

Length	2.1 in [53.34 mm]
Width/Diameter	0.9 in [22.86 mm]
Height	1.2 in [30.48 mm]

Click the following link (or enter part number in "SEARCH" on website) to obtain additional part information including price, inventory and certifications:
[RF Surge Protector SPD, Reverse Polarity TNC F/F, DC - 6GHz, 60 V Max., 10kA, Gas Discharge Tube GTH-RPTFF-AL](#)

RF Surge Protector SPD, Reverse Polarity TNC F/F, DC
- 6GHz, 60 V Max., 10kA, Gas Discharge Tube



GTH-RPTFF-AL

Weight	0.25 lbs [113.4 g]
Housing Material and Plating	Brass, Nickel
Configuration	
Input Connector	TNC Female Reverse Polarity
Output Connector	TNC Female Reverse Polarity

Environmental Specifications

Temperature	
Operating Range	-40 to +85 deg C

Compliance Certifications

RoHS Compliant	Yes
----------------	-----

Plotted and Other Data

Notes:

PolyPhaser protects and increases the reliability of global RF communications networks, including transportation, telecommunications, defense, security and industrial applications, with superior RF surge protection technologies including DC Block, DC Pass and Ultra Low PIM. Backed by responsive service and expert technical support PolyPhaser continually expands its product offering and services to serve engineers' urgent needs for RF components in mission critical communication networks.

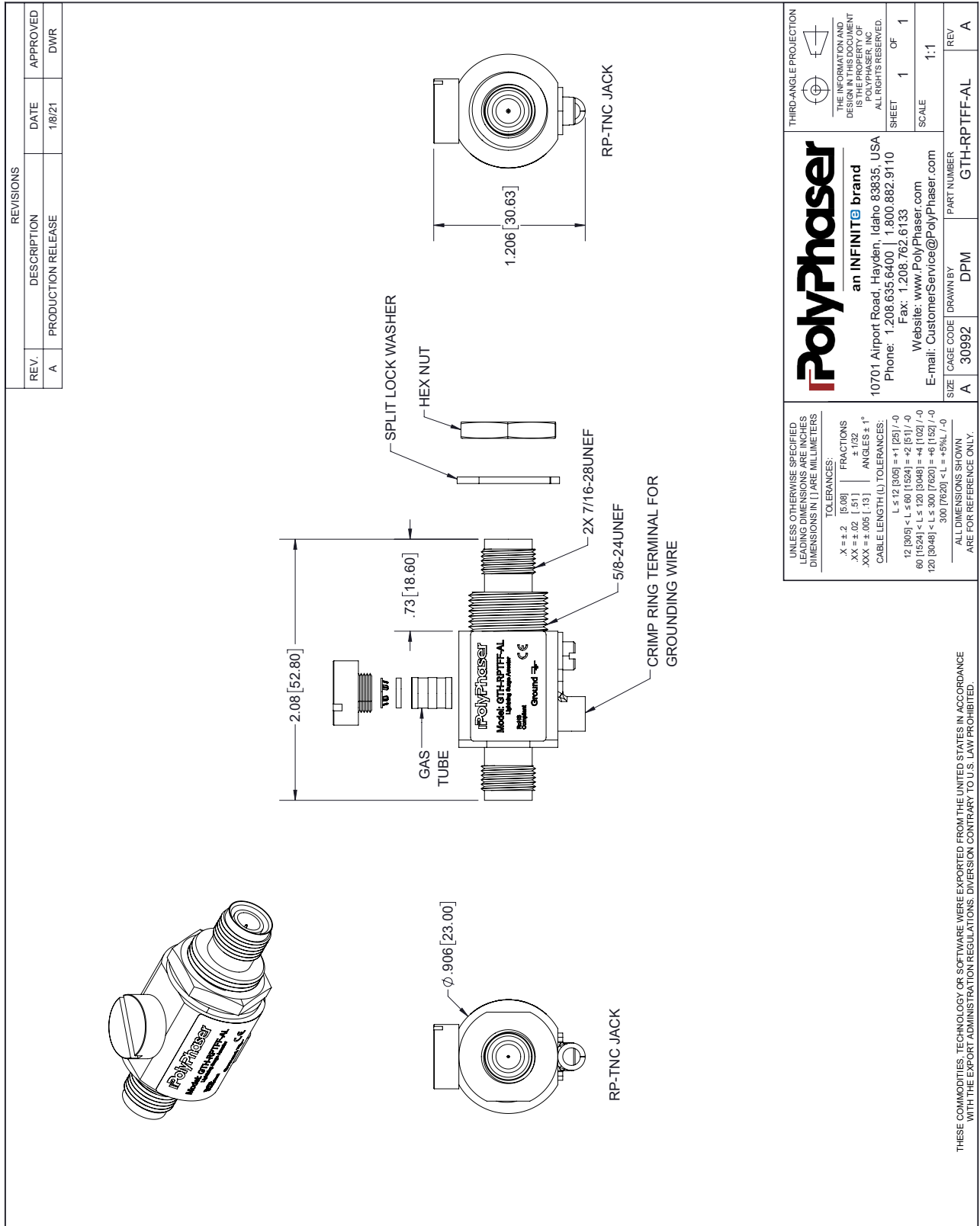
Click the following link (or enter part number in "SEARCH" on website) to obtain additional part information including price, inventory and certifications: [RF Surge Protector SPD, Reverse Polarity TNC F/F, DC - 6GHz, 60 V Max., 10kA, Gas Discharge Tube GTH-RPTFF-AL](#)

URL: <https://www.polyphaser.com/GTH-RPTFF-AL-p.aspx>

The information contained in this document is accurate to the best of our knowledge and representative of the part described herein. It may be necessary to make modifications to the part and/or the documentation of the part, in order to implement improvements. PolyPhaser reserves the right to make such changes as required. Unless otherwise stated, all specifications are nominal. PolyPhaser does not make any representation or warranty regarding the suitability of the part described herein for any particular purpose, and PolyPhaser does not assume any liability arising out of the use of any part or documentation.

RF Surge Protector SPD, Reverse Polarity TNC F/F, DC - 6GHz, 60 V Max., 10kA, Gas Discharge Tube

GTH-RPTFF-AL CAD Drawing



PolyPhaser
an INFINITE brand

10701 Airport Road, Hayden, Idaho 83835, USA
Phone: 1.208.635.6400 | 1.800.882.9110
Fax: 1.208.762.6133
Website: www.PolyPhaser.com
E-mail: CustomerService@PolyPhaser.com

UNLESS OTHERWISE SPECIFIED LEADING DIMENSIONS ARE INCHES DIMENSIONS IN [] ARE MILLIMETERS

TOLERANCES:

.X = ±.2 [5.08] FRACTIONS ±.1/32
.XX = ±.02 [.51] ±.1/32
.XXX = ±.005 [.13] ANGLES ± 1°

CABLE LENGTH (L) TOLERANCES:

L ≤ 12 [305] = +1 [25] / -0
12 [305] < L ≤ 60 [1524] = +2 [51] / -0
60 [1524] < L ≤ 120 [3048] = +4 [102] / -0
120 [3048] < L ≤ 300 [7620] = +6 [152] / -0
300 [7620] < L = +5% / -0

ALL DIMENSIONS SHOWN ARE FOR REFERENCE ONLY.

SIZE A CAGE CODE 30992 DRAWN BY DPM PART NUMBER GTH-RPTFF-AL

THESE COMMODITIES, TECHNOLOGY OR SOFTWARE WERE EXPORTED FROM THE UNITED STATES IN ACCORDANCE WITH THE EXPORT ADMINISTRATION REGULATIONS. DIVERSION CONTRARY TO U.S. LAW PROHIBITED.

T-Rev.D