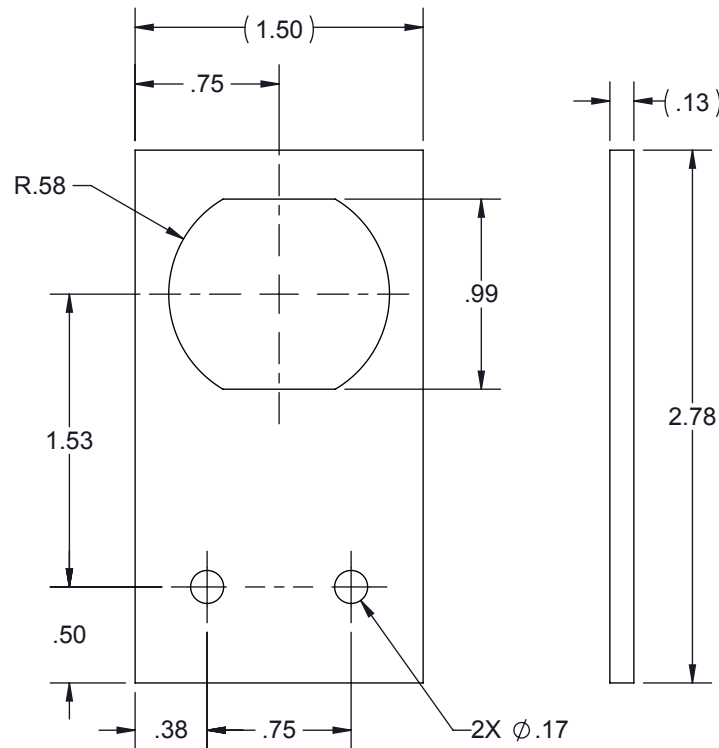
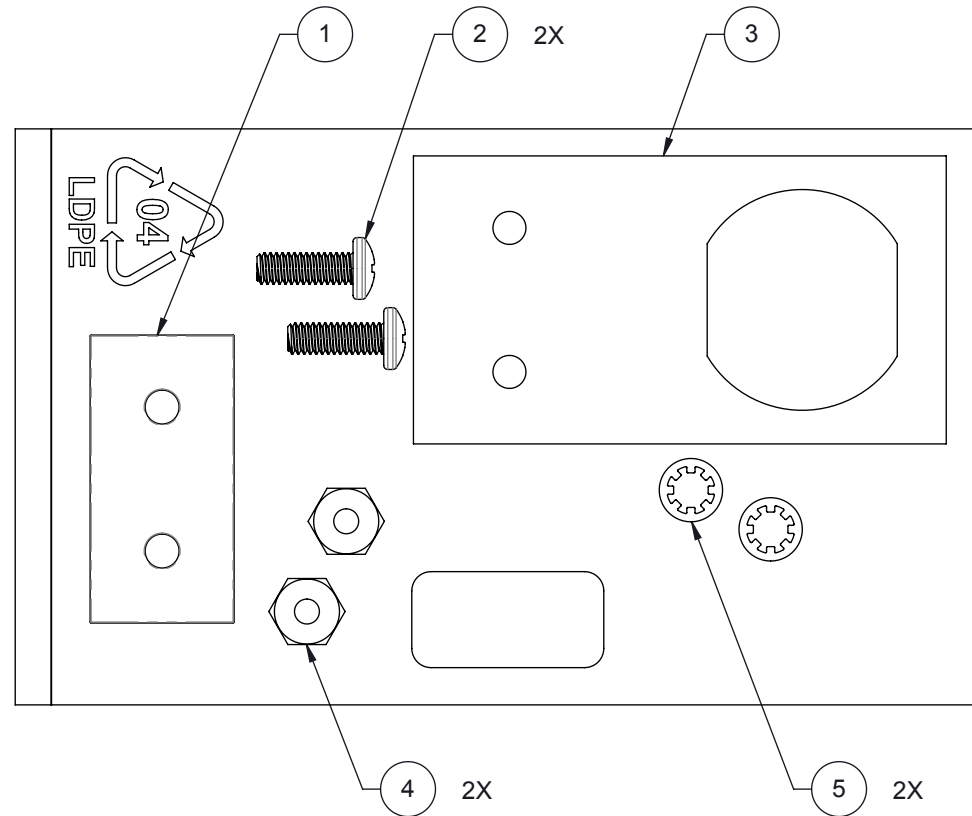


| REVISIONS | | | | |
|-----------|--------------|-------|---------|----------|
| REV. | DESCRIPTION | ECN | DATE | APPROVED |
| B | REFER TO ECN | 12527 | 4/17/14 | KCB |



MOUNTING PATTERN



| ITEM | QTY. | DESCRIPTION |
|------|------|------------------------------------|
| 1 | 1 | GSA SANDWICH PLATE |
| 2 | 2 | SCREW 8-32x.50 PHIL MS PAN 18-8 SS |
| 3 | 1 | BRACKET MOUNT FLAT DIN AL |
| 4 | 2 | NUT 8-32 HEX 18-8 SS |
| 5 | 2 | WASHER #8 410 SS INTERNAL |

CUSTOMER APPROVAL: _____ DATE: _____

ALL DIMENSIONS SHOWN ARE FOR REFERENCE ONLY.

| | | | | | | |
|--|--|---------------------------------|-------------------------------|---------------------------------------|-----------------|--|
| UNLESS OTHERWISE SPECIFIED LEADING DIMENSIONS ARE INCHES DIMENSIONS IN [] ARE MILLIMETERS | | DRAWN IB 4/11/00 | DATE 4/11/00 | | | SHEET 1 OF 1 |
| TOLERANCES: FRACTIONS=± 1/32 .XX=± .03 ANGLES=± 1° .XXX=± .010 | | ENG APPD RCD 5/22/00 | PRODUCT MGR JLJ 5/22/00 | | | SCALE 1:1 |
| NOTICE: THE INFORMATION AND DESIGN IN THIS DOCUMENT IS THE PROPERTY OF POLYPHASER CORPORATION. ALL RIGHTS RESERVED. | | MARKETING APPD PH 5/22/00 | PROJECT NO. | TITLE KIT GND STRAP ADAPTER DIN | | |
| THIRD-ANGLE PROJECTION | | DOCUMENT NAME GSA-KIT-D-C | SIZE A | CAGE 30992 | PROD CAT GRP | CUSTOMER SPECIFICATION PART NUMBER GSA-KIT-D |
| | | | | | | REV B |

THESE COMMODITIES, TECHNOLOGY OR SOFTWARE WERE EXPORTED FROM THE UNITED STATES IN ACCORDANCE WITH THE EXPORT ADMINISTRATION REGULATIONS. DIVERSION CONTRARY TO U.S. LAW PROHIBITED.