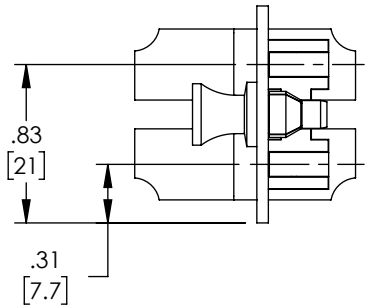
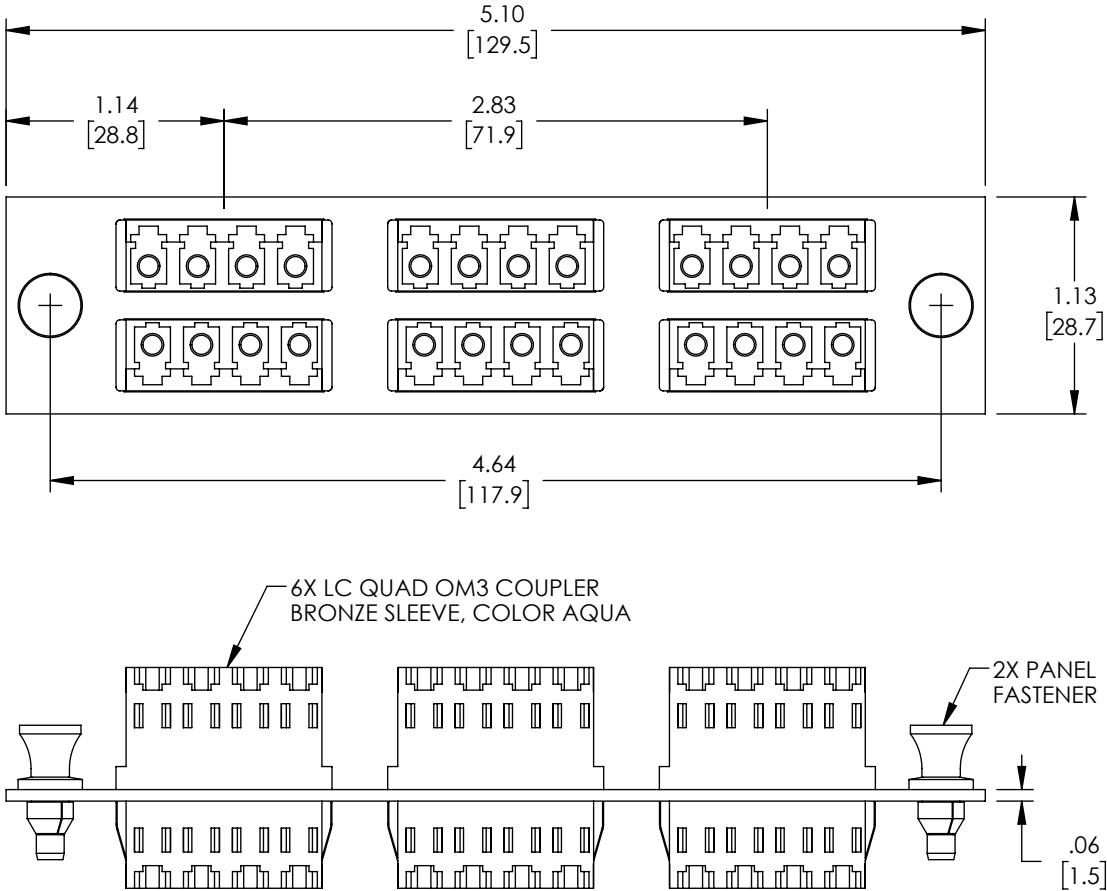



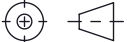
THE INFORMATION CONTAINED IN THIS DRAWING IS THE SOLE PROPERTY OF POLYPHASER, INC. ANY REPRODUCTION IN PART OR WHOLE WITHOUT THE WRITTEN PERMISSION OF POLYPHASER, INC. IS PROHIBITED.

REVISIONS			
REV	DESCRIPTION	DATE	APPROVED
A	INITIAL RELEASE	06/02/21	PHOSPODAR



- NOTES:
1. FINISH: BLACK POWDER COAT.
 2. RECOMMENDED MOUNTING HOLE FOR MATING FASTENER:
Ø.252 +.002/-.000.
 3. ASSEMBLY SHALL BE INDIVIDUALLY PACKAGED IN ACCORDANCE WITH L-COM SPECIFICATION PS-0031.
 4. ALL DIMENSIONS FOR REFERENCE ONLY.
 5. COUPLERS SUPPLIED WITH DUST CAPS, NOT SHOWN.

REGULATORY COMPLIANCE:
EU RoHS DIRECTIVE (MOST RECENT RELEASED VERSION)

UNLESS OTHERWISE SPECIFIED, DIMENSIONS ARE IN INCHES [mm]		APPROVALS		DATE		<div> an INFINITI® brand</div>		10701 Airport Road, Hayden, ID 83835 Phone: 1.208.635.6400 Fax: 1.208.955.2041		
OVERALL CABLE LENGTH TOLERANCE: ≤12 [305] = +1 [25] / -0 >12 [305] ≤60 [1524] = +2 [51] / -0 >60 [1524] ≤120 [3048] = +4 [102] / -0 >120 [3048] ≤300 [7620] = +6 [152] / -0 >300 [7620] = +5% / -0		DRAWN BY DMAY		06/02/21						
ALL OTHER DIMENSIONAL TOLERANCES: .X = ±.2 [5] FRACTIONS ± 1/32 .XX = ±.02 [.5] ANGLES ± 1° .XXX = ±.005 [1.3]		CONFIGURATION DETAILS OF UNDIMENSIONED FEATURES MAY VARY		CATEGORY		FIBER OPTIC SUB PANELS				
				APPROVED BY PHOSPODAR		06/02/21		PRODUCT DESCRIPTION		
						FIBER ADAPTER PANEL LC QUAD 6 AQUA CONNECTOR				
THIRD-ANGLE PROJECTION 		COLOR VARIATIONS MAY OCCUR		SIZE A		CAGE CODE 30992		ITEM NO. FPAL-LCQ6-AQ-M3BR		REV. A
				SCALE: NONE		CAD FILE: FPAL-LCQ6-AQ-M3BR.SLDDRW			SHEET 1 OF 1	