

## 2 FT SMA to SMA M/M 195 Series Low Loss Cable Jumper

### CA195LL036-2FT

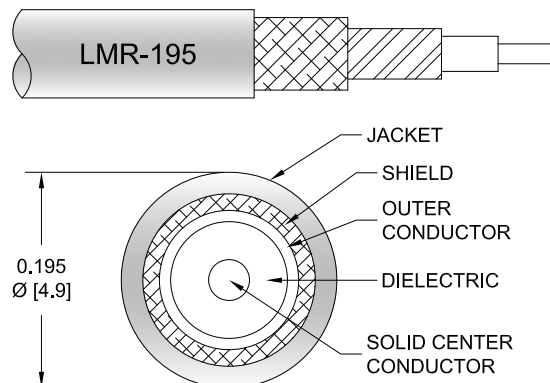


#### Configuration

- Connector 1: SMA Male
- Connector 2: SMA Male
- Cable Type: PPBC-195LL

#### Features

- LMR Equivalent Coax
- Max Frequency 5.8 GHz
- Shielding Effectivity > 90 dB
- 80% Phase Velocity
- Low Insertion Loss
- Double Shielded
- PE Jacket
- One Time Bend Radius of 0.5 Inches



#### Applications

- General Purpose
- Laboratory Use
- Antenna Installations
- Land Mobile Radio & Other Communication Systems
- Cellular & Wi-Fi Systems

#### Description

PolyPhaser CA195LL036-2FT is a 2 foot SMA to SMA M/M 195 Series Low Loss Cable Jumper is built using high quality components by skilled technicians to ensure a reliable product. The SMA Male cable jumper connections are designed to industry standard interface dimensions to ensure superior performance. This product is in stock and available for same day shipping. This high-quality RF coaxial assembly is perfect in many RF Interconnect applications such as industrial / commercial, Wi-LAN, laboratory test and measurement, and many other applications. The CA195LL036-2FT SMA to SMA cable assembly is the perfect companion to PolyPhaser line of RF surge protection devices particularly when used as an antenna jumper cable.

The 195 Series coax used in these SMA to SMA assemblies is a 0.195 inch diameter coax with a black PE jacket. This cable's foam PE dielectric is low loss material with a VoP of 80% reducing the attenuation when compared to solid dielectric coax cables. PolyPhaser Low Loss 195 Series coax has a solid center conductor and uses a double shield consisting of a wire braid over a foil tape construction providing >90% shielding effectivity. The construction and materials of the CA195LL036-2FT result in a coax cable assembly with 0.5 inch one time bend radius and a repeat bend radius of 2 inches. The cable assembly's combination of SMA to SMA Male/Male and 195 Series Low Loss Cable supports a maximum operating frequency of 5800 MHz. Detailed specifications for this configuration includes layout drawings and performance and material specifications. This product is built and tested by our expert technicians to fulfill your cable assembly needs.

Polyolefin heat shrink strain relief boots add additional strength on both ends of this 2 foot assembly. These epoxy filled heat shrinks provide strain relief to help prevent damage from over-bending the assembly ends.

Click the following link (or enter part number in "SEARCH" on website) to obtain additional part information including price, inventory and certifications:  
[2 FT SMA to SMA M/M 195 Series Low Loss Cable Jumper CA195LL036-2FT](#)

## 2 FT SMA to SMA M/M 195 Series Low Loss Cable Jumper



### CA195LL036-2FT

#### Electrical Specifications

Description	Minimum	Typical	Maximum	Units
Frequency Range	DC		5.8	GHz
VSWR			1.5:1	
Velocity of Propagation		80		%
RF Shielding	90			dB
Capacitance		25.4 [83.33]		pF/ft [pF/m]
Operating Voltage (AC)			500	Vrms
Jacket Spark			5,000	Vrms

#### Specifications by Frequency

Description	F1	F2	F3	F4	F5	Units
Frequency	0.25	0.5	1	2.5	5.8	GHz
Insertion Loss (Max.)	0.32	0.36	0.44	0.58	0.8	dB

##### Electrical Specification Notes:

The Insertion Loss data above is based on the performance specifications of the coax cable and connectors used in this assembly. Insertion Loss is estimated as 0.1 dB per connector.

#### Mechanical Specifications

##### Size

Length	24 in [609.6 mm]
Diameter	0.195 in [4.95 mm]
Weight	0.074 lbs [33.57 g]

##### Cable

Cable Type	PPBC-195LL
Impedance	50 Ohms
Inner Conductor Type	Solid
Inner Conductor Material and Plating	Copper
Dielectric Type	PE (F)
Number of Shields	2
Shield Layer 1	Aluminum Tape
Shield Layer 2	Tinned Copper Braid
Jacket Material	PE, Black
Jacket Diameter	0.195 in [4.95 mm]
One Time Minimum Bend Radius	0.5 in [12.7 mm]
Repeated Minimum Bend Radius	2 in [50.8 mm]

Click the following link (or enter part number in "SEARCH" on website) to obtain additional part information including price, inventory and certifications:  
[2 FT SMA to SMA M/M 195 Series Low Loss Cable Jumper CA195LL036-2FT](#)

## 2 FT SMA to SMA M/M 195 Series Low Loss Cable Jumper



### CA195LL036-2FT

#### Connectors

Description	Connector 1	Connector 2
Type	SMA Male	SMA Male
Specification	MIL-STD-348A	MIL-STD-348A
Impedance	50 Ohms	50 Ohms
Contact Material and Plating	Brass, Gold	Brass, Gold
Contact Plating Specification	50µ in. minimum	50µ in. minimum
Dielectric Type	Teflon	Teflon
Body Material and Plating	Brass, Nickel	Brass, Nickel
Body Plating Specification	100µ in. minimum	100µ in. minimum
Coupling Nut Material and Plating	Brass, Nickel	Brass, Nickel
Coupling Nut Plating Specification	100µ in. minimum	100µ in. minimum
Hex Size	16-May in	16-May in
Torque	5 in-lbs [0.57 Nm]	5 in-lbs [0.57 Nm]

#### Environmental Specifications

##### Temperature

Operating Range

-40 to +85 deg C

#### Compliance Certifications

#### Plotted and Other Data

Notes:

- Values at 25°C, sea level.

PolyPhaser protects and increases the reliability of global RF communications networks, including transportation, telecommunications, defense, security and industrial applications, with superior RF surge protection technologies including DC Block, DC Pass and Ultra Low PIM. Backed by responsive service and expert technical support PolyPhaser continually expands its product offering and services to serve engineers' urgent needs for RF components in mission critical communication networks.

Click the following link (or enter part number in "SEARCH" on website) to obtain additional part information including price, inventory and certifications: [2 FT SMA to SMA M/M 195 Series Low Loss Cable Jumper CA195LL036-2FT](https://www.polyphaser.com/2-ft-sma-to-sma-m-m-195-series-low-loss-cable-jumper-p.aspx)

URL: <https://www.polyphaser.com/2-ft-sma-to-sma-m-m-195-series-low-loss-cable-jumper-p.aspx>

The information contained in this document is accurate to the best of our knowledge and representative of the part described herein. It may be necessary to make modifications to the part and/or the documentation of the part, in order to implement improvements. PolyPhaser reserves the right to make such changes

Click the following link (or enter part number in "SEARCH" on website) to obtain additional part information including price, inventory and certifications: [2 FT SMA to SMA M/M 195 Series Low Loss Cable Jumper CA195LL036-2FT](https://www.polyphaser.com/2-ft-sma-to-sma-m-m-195-series-low-loss-cable-jumper-p.aspx)



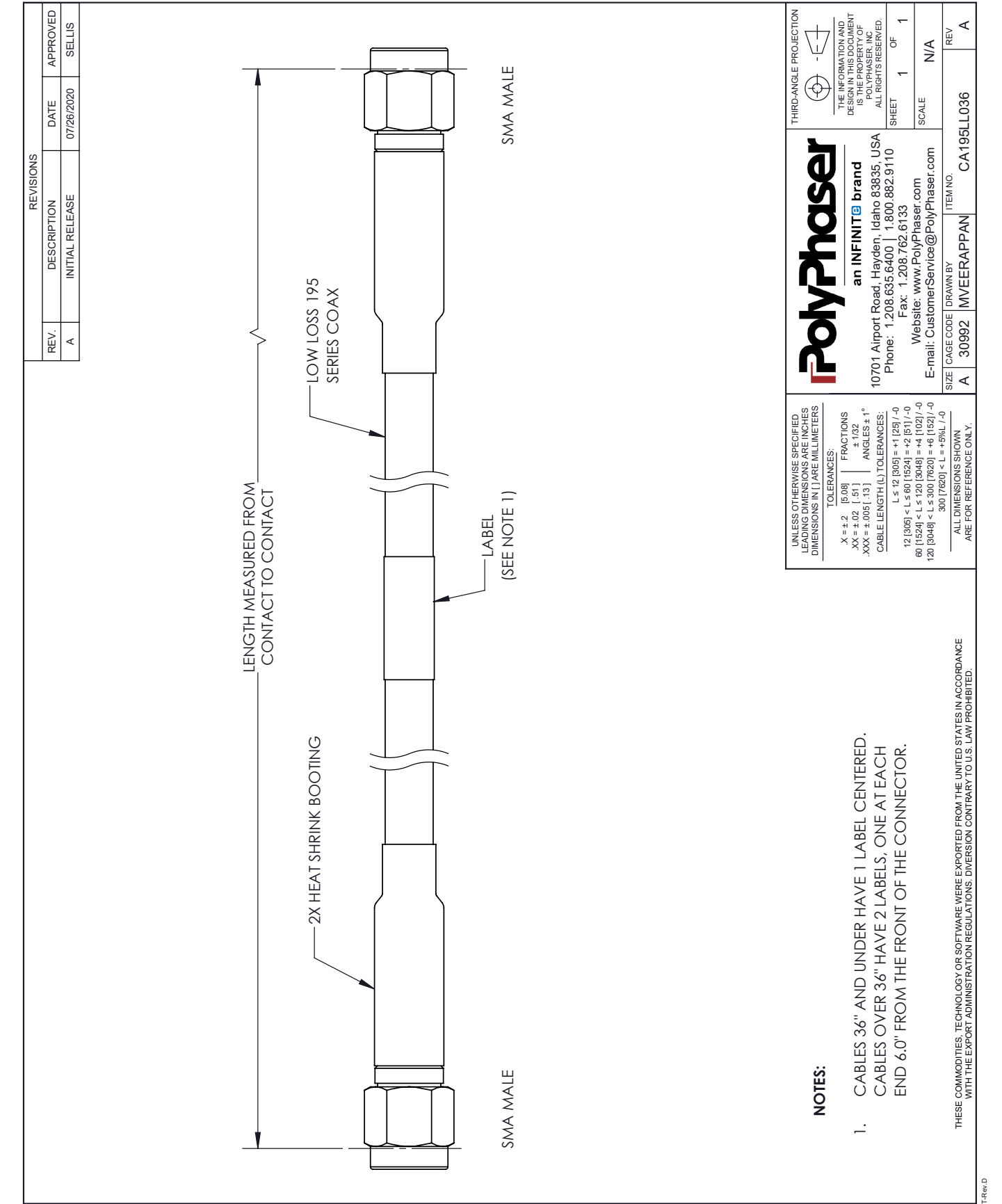
## 2 FT SMA to SMA M/M 195 Series Low Loss Cable Jumper

### CA195LL036-2FT



as required. Unless otherwise stated, all specifications are nominal. PolyPhaser does not make any representation or warranty regarding the suitability of the part described herein for any particular purpose, and PolyPhaser does not assume any liability arising out of the use of any part or documentation.

CA195LL036-2FT CAD Drawing



NOTES:

1. CABLES 36" AND UNDER HAVE 1 LABEL CENTERED.  
CABLES OVER 36" HAVE 2 LABELS, ONE AT EACH  
END 6.0" FROM THE FRONT OF THE CONNECTOR.

THESE COMMODITIES, TECHNOLOGY OR SOFTWARE WERE EXPORTED FROM THE UNITED STATES IN ACCORDANCE  
WITH THE EXPORT ADMINISTRATION REGULATIONS. DIVERSION CONTRARY TO U.S. LAW PROHIBITED.

CA195LL036-2FT REV 1 | © 2020 Infinite Electronics, Inc. PolyPhaser is a registered trademark of Infinite Electronics, Inc.

5

T Rev.D